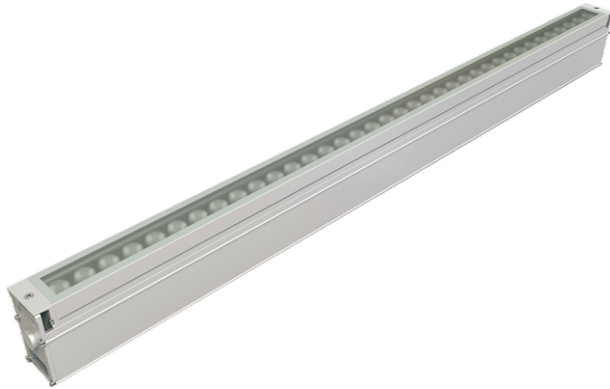
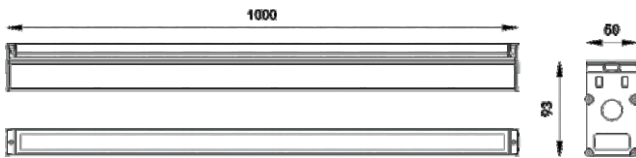




# i-INL-411



### DIMENSION



## Specication

	i-INL-410A	i-INL-410B	i-INL-410C	
Power (Luminaire)	12W	18W	24W	
LED Type	48Pcs	18Pcs	24Pcs	Epistar/Osram/CREE
CRI	>90			
Size	L1000*W50*H93			
Lumen (Luminaire)	78lm/W			
Input Volt	DC 24V / AC 100-265V			
Color Temperature	1800K-6500K, R, G, B, Y, RGB, RGBW			
Beam Angle	10°*40° ,10°*60° ,20°*60°			
Driver	Nondim / Dimmer Triac 0-10v / DMX512			
LED Life	50000h			
IP Rating	IP 67			
Load capacity	IK 08, Max 800Kg load			
Enclosure Material	Aluminum			
Glass	Tempered glass T8mm, Clear / Frosted treatment			

