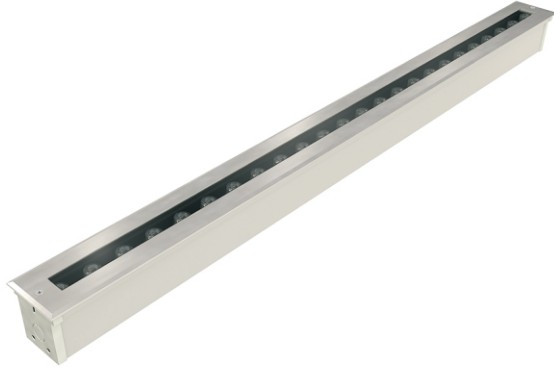
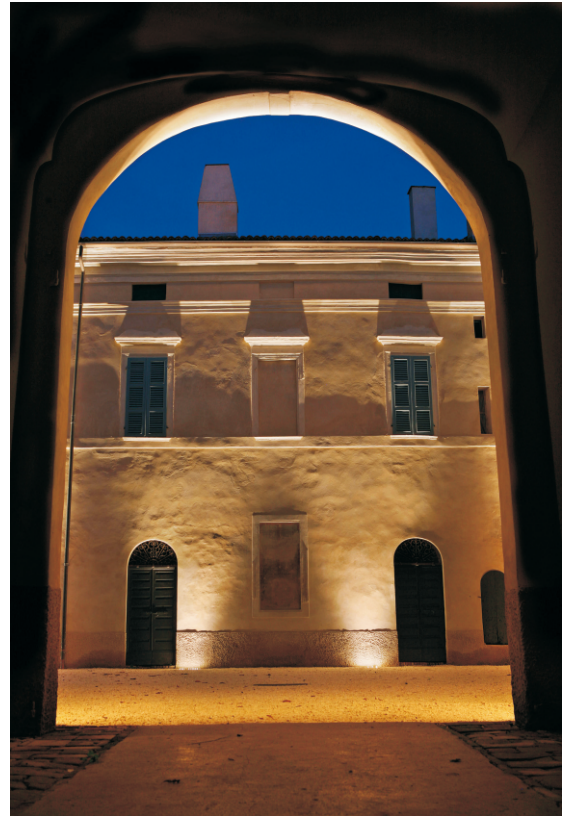
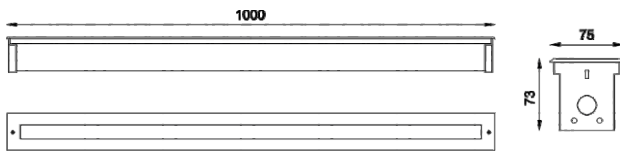




# i-INL-412



### DIMENSION



## Specication

|                    | i-INL-412A                                     | i-INL-412B |                    |
|--------------------|--|------------|--------------------|
| Power (Luminaire)  | 18W  | 24W        |                    |
| LED Type           | 18Pcs  | 24Pcs      | Epistar/Osram/CREE |
| CRI                | >90  |            |                    |
| Size               | L1000*W75*H73                                  |            |                    |
| Lumen (Luminaire)  | 78lm/W   |            |                    |
| Input Volt         | DC 24V / AC 100-265V                           |            |                    |
| Color Temperature  | 1800K-6500K, R, G, B, Y, RGB, RGBW             |            |                    |
| Beam Angle         | 10°*40°, 10°*60°, 20°*60°                      |            |                    |
| Driver             | Nondim / Dimmer Triac 0-10v / DMX512           |            |                    |
| LED Life           | 50000h   |            |                    |
| IP Rating          | IP 67  |            |                    |
| Load capacity      | IK 10, Max 2000Kg load                         |            |                    |
| Enclosure Material | Aluminum housing + Stainless Steel trim        |            |                    |
| Glass              | Tempered glass T8mm, Clear / Frosted treatment |            |                    |

