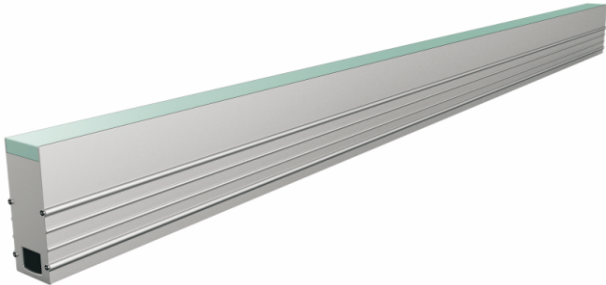
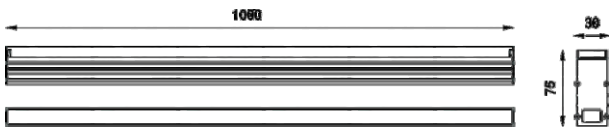




# i-INL-414



### DIMENSION



## Specication

Power (Luminaire)	12W
LED Type	Power LED (60pcs/M)
CRI	>90
Size	L1000*W30*H75
Lumen (Luminaire)	78lm/W
Input Volt	DC 24V
Color Temperature	1800K-6500K, R, G, B, Y, RGB, RGBW
Beam Angle	120°
Driver	Nondim / Dimmer Triac 0-10v / DMX512
LED Life	50000h
IP Rating	IP 67
Load capacity	IK 08, Max 800Kg load
Enclosure Material	Aluminum
Glass	Tempered glass T12mm, / Frosted treatment

