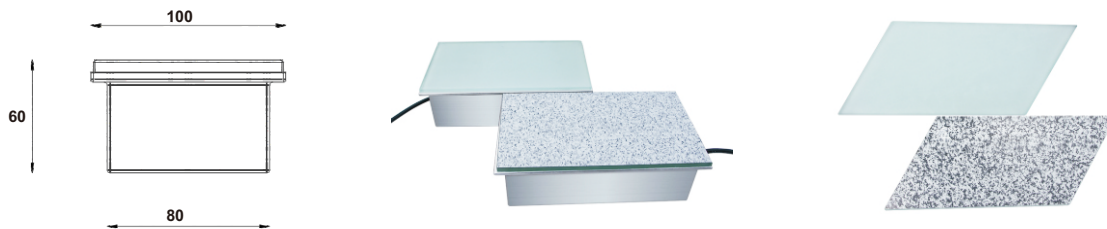




i-INL-417



DIMENSION



Specication

Power (Luminaire)	3W / 6W / 9W / 15W
LED Type	Power LED
CRI	>90
Size	Standard size: 100*100mm, 200*200mm, 300*300mm Size customizable, Shape customizable
Lumen (Luminaire)	25lm/W
Input Volt	DC 24V
Color Temperature	1800K-6500K, R, G, B, Y, RGB, RGBW
Beam Angle	120°
Driver	Nondim / Dimmer Triac 0-10v / DMX512
LED Life	50000h
IP Rating	IP 67
Load capacity	IK 10, Max 2000Kg load
Enclosure Material	304/316 Stainless steel
Glass	Tempered glass T12mm, / Frosted treatment

